

# Maptaskr

## Microsoft Certified Partner

The complete Mapping & Location Intelligence ISV for Power Platform  
#HigherClientsSatisfaction



### What is Maptaskr?

Maptaskr is an Australian based software company, building location and geospatial based solutions for the Microsoft Power Platform.

Maptaskr is a comprehensive mapping, geospatial and location intelligence solution for Dynamics 365, Power Platform and Microsoft technologies. Maptaskr enables advanced mapping capability, so users can finally bring a geospatial and locational dimension to their data.

Maptaskr specialises in implementing solutions based around the Microsoft business applications technology stack; this includes utilising like Dynamics 365, Power Platform (Power Apps, Power BI, & Automate) and the full Microsoft Office 365 suite to solve modern business digital transformation problems.

### Integrated Solutions

Helping customers to analyse and integrate platforms with legacy and modern cloud systems to leverage modern technology to drive competitiveness and results.

### Portal Solutions

Helping customers to engage with external users with modern and intuitive interface to interact and capture data securely.

### Maptaskr Services

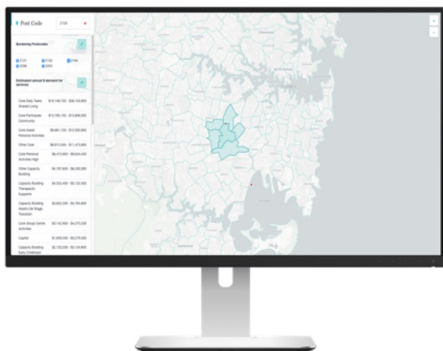
Helping customers with full range of services to extend off-the-shelf solutions or build fit for purpose bespoke solutions that meet security, quality and integrity requirements.

The screenshot shows the Maptaskr web interface. At the top left, there is a search bar for "Postcode" with the value "5000" entered. Below this is a toggle for "See current vs forecast" with a radio button selected for "Forecast". A section titled "Select any bordering postcodes you are interested in" contains a grid of checkboxes for various postcodes (5006, 5007, 5031, 5034, 5035, 5061, 5063, 5065, 5067, 5069, 5081). Below that is a section "How much will NDIS participants spend in this area each year?" with a table showing expected annual demand for services (including GST) by 2023. The table has two rows: "Total" with a range of \$13,281,500 - \$25,249,800, and "Daily Living Support in Shared Accommodation" with a range of \$685,100 - \$13,284,400. The right side of the interface is a map of Adelaide, Australia, with various suburbs labeled. A "Feedback" button is visible on the right edge of the map area.



**Australian Government**

**Department of Social Services**



The Department of Social Services wanted to promote engagement with NDIS providers. To this they commissioned the BLCW program. THE BLCW program included the 'Demand Map'. An interactive map detailing sensitive NDIS data. The project involved end to end delivery of all aspects of the BLCW Website, Demand Map (utilising the Maptaskr product), BLCW Video media, CRM implementation and integration between the BLCW portal (Dynamics 365).

Project activities:

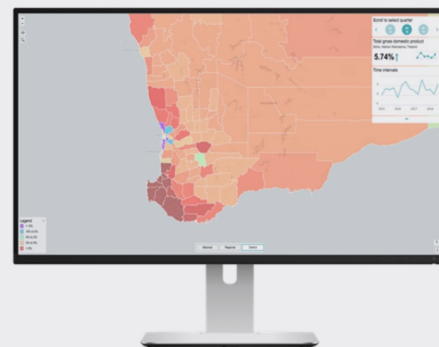
- Full Website (<https://blcw.dss.gov.au>)
- Dynamics 365 with portal integration
- Demand map with custom design
- Ongoing helpdesk facility and support

AlphaBeta wanted a product that would utilise cutting edge geospatial satellite sensor data to help show Gross Domestic Product (GDP) below country level. Using the Maptaskr product, satellite aggregation module was build including a data model that enabling view of GDP to be produced below the national level.

Project activities:

- Full website (<https://globalgdp.ai>)
- GDP map with custom design
- Ongoing helpdesk facility and support

**alphaBeta**  
strategy x economics



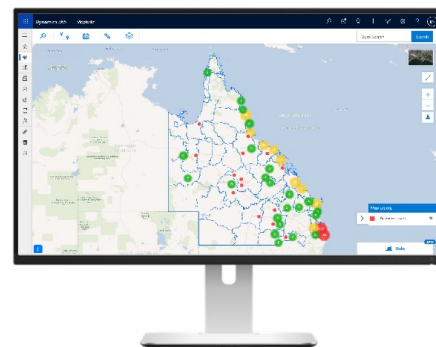
**Australian Government**

**Department of the Prime Minister and Cabinet**

The Department of Prime Minister and Cabinet were looking for a mapping solution that allowed the internal business units within the department to visualize and action various activities like remote site analysis and visits.

Project activities:

- Maptaskr installation and configuration
- ABS LGA/boundaries setup
- Product support



Would you like to hear more?  
[maptaskr.com](https://maptaskr.com)

